

KSI Executive Team



R. Stephen Green
President & CEO



Marcella Gladney Lee
Vice President /
General Counsel



Terry Gibson
Controller



Pam Harris
Parent Engagement
Specialist



Manomay Malathip
Lead Life Coach/Scholar
Engagement Specialist/
KS Site Manager



James McGirt
Lead Academic Coach- Math/
MO Site Manager

Life Coaches

Landon Mickens
Claudia Vazquez-Puebla
Will McDowell
David Bryant
Cedric Wesley
Jaime Goring
Sonrisa Rowh
Michael Samuels
Cynthia Robinson

Academic Coaches

Norm Sedillo
Jarius Jones
April Flowers
Marilu Perez
Jennifer Ray

Connie Morgan, Database Coordinator
Karen Collins, Executive Administrative Assistant
Sue Emslie, Administrative Assistant

KSI Board of Directors

Daniel Kingston
John Tyler
Paul Schofer
R. Stephen Green
Anthony R. Masso

KSI Advisory Board

Tom Bloch
Arnold H. Brown
Ray Daniels
Jan Kremer
Anthony R. Masso
Jeanne Patterson

Fred Pryor
Dr. Bernard Taylor
Guy Townsend, III
R. Stephen Green
Carl Schramm
John Tyler

COMMUNITY Connection

January/February 2006

To give real service you must add something which cannot be bought or measured with money, and that is sincerity and integrity. -Douglas Adams

Kauffman Scholars and their families not only receive rigorous academic enrichment services in math, science, and English language arts; caring and compassionate life skill instruction and mentoring; college and career planning; and field trips including college visits. Scholars

and their families have the opportunity to give back to the community through organized projects. Our mission is to help every scholar prepare to enter and graduate from college, and then ultimately contribute to the betterment of his or her community.

"The seeds we plant and nurture today will blossom to become the beautiful flowers of tomorrow."
- R. Stephen Green, Ed.D., President & CEO

Kauffman Scholars Girls Get Locked In for L.I.F.E.

Recently, girls of Kauffman Scholars Class 2 participated in a lock-in held on the campus of UMKC to introduce them to additional life skills critical to their growth as positive young women. Lock In For Excellence (LIFE) provided safe, interactive, and fun activities as well as workshops on bullying, drugs, alcohol, etiquette, health, fitness, sex, and relationships.

"L.I.F.E is an annual event for Scholars. We use this opportunity to go deeper on issues that concern young people and provide them with skills to use as they progress in our program and in their life," says KSI Lead Life Coach/Scholar Engagement Specialist Manomay Malathip. Participants were wowed by the dancing talent of Renita Johnson, KCK Scholar from Eisenhower, who won this year's talent show and Jessica Walker, KCK Scholar from Coronado, showed "how low she could go" winning the limbo contest.



Limbo contest winner Jessica Walker poses with Aundra Reynolds, Danielle Williams, and Antonia Walker

This year's theme was a luau and the girls were greeted with leis. This year's events were led by academic coaches April Flowers, Marilu Perez, and Jennifer Ray and life coaches Sonrisa Rowh and Cynthia Robinson.





A Message From Our President and CEO

James Baldwin once wrote, "Not everything that is faced can be changed. But nothing can be changed until it is faced." Without aggressive and intensive interventions, the current conditions are ripe for increased disparity between advantaged and disadvantaged students. We are faced with a number of very disturbing gaps that can and must be closed:

Recent research, however, has gone beyond merely exposing these disturbing gaps and inequities. This research has provided us with a blueprint for addressing these gaps and has revealed what must be done to face squarely the challenge of change necessary to reach and teach all students. One study by The American Council on Education's *Access and Persistence: 10 Years of Longitudinal Research on Student*, revealed the following:

- **Teaching and Learning Gap:** The gap between the quality of teaching and learning in large urban school districts and that of suburban districts or parochial schools
- **Instructional Rigor Gap:** The gap in instructional rigor between advantaged families and disadvantaged families
- **Parent Engagement Gap:** The gap between parents who know how to assist and advocate for their child's education needs and parents who do not
- **Information Gap:** The gap between those who have access to information about the intricacies of the college-going process and those who do not
- **Achievement Gap:** The gap between those who perform well on the standards of measure used to determine access to course work or college and those who do not
- **High School Graduation Gap:** The gap between those who graduate from high school and those who dropout
- **College Access Gap:** The gap between those who gain access to institutions of higher education and those who do not gain access or have equal opportunity of access
- **College Persistence and Graduation Gap:** The gap between those who, upon gaining

access, are able to persist and graduate from college and those who do not

- **Socio-economic Gap:** Hence, the gap between those who have financial stability and independence and those who have not

Recent research, however, has gone beyond merely exposing these disturbing gaps and inequities. This research has provided us with a blueprint for addressing these gaps and has revealed what must be done to face squarely the challenge of change necessary to reach and teach all students. One study by The American Council on Education's *Access and Persistence: 10 Years of Longitudinal Research on Student*, revealed the following:

- Moderate to high-risk students whose parents reported frequently discussing school-related matters were twice as likely to enroll in four-year colleges.
- When most or all of their high school friends planned to enroll in a four-year college, these students were four times as likely to enroll in college as those who had no friends planning to attend college.
- Students who received help filling out college applications or preparing for entrance exams were more likely to enroll than those who did not.
- Students who participated in high school outreach programs almost doubled their odds of enrolling in a four-year college

Kauffman Scholars, Inc. has pledged to discover, develop, and implement the research-proven best practices and strategies that will enable students to succeed socially and academically. As a result, we have incorporated many of the elements mentioned above in our work with our Scholars. With this support, our Scholars are more likely to realize their full potential and become productive citizens and contributing members to the Kansas City community and society at-large.

R. Stephen Green, Ed.D.
President & CEO



Kauffman Scholars' Parents Experience the Joy of Giving Back

More than 45 parents of Kauffman Scholars assisted People to People International at the Operation Iraqi Children Warehouse in Kansas City, MO assemble over 1,800 school supply kits for children affected by Hurricane Katrina and Hurricane Rita. The kits consisted of scissors, rulers, pencils with erasers, colored pencils, notebook paper, composition books, folders, and pencil bags.

Parents described their experience as fulfilling and extremely worthwhile. KSI parents challenged themselves and each other to make as many kits as they

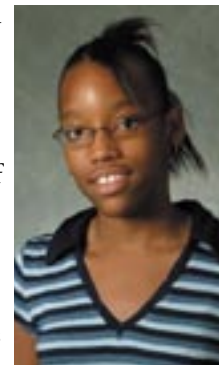
could in the allotted time. "It became somewhat of a competition," says Parent Engagement Specialist Pam Harris. "We appreciate the parents and all of their hard work. Many shared with me their excitement and fulfillment of giving back and helping others."

This community service project is just one of many ways that parents participate in their Scholar's experience. Kauffman Scholars, Inc., thanks all of the parents that participated and made this community service project a success.

KSI - RECOGNIZING OUTSTANDING SCHOLARS

Meet Ps'yche' Anderson

Ps'yche' is in the 7th grade at Arrowhead Middle School. In addition to being a Kauffman Scholar, she is a participant of Gear Up, a program that provides early college preparation and awareness activities to students through comprehensive mentoring, counseling, outreach, and other supportive services. In November, Ps'yche' and others were recognized for successfully completing a project with Gear Up and were awarded a pizza and bowling party. She also received special recognition for reading 2,000 pages during the summer. Scholastics Reading rewarded Ps'yche' by giving her a CD player, two free! meals at Cracker Barrel, two free beverages at Quik Trip, a Harry Potter hat, a reading poster with her picture, and a book. In addition, Ps'yche' was treated to lunch. She had the opportunity to leave



school at noon and was chauffeured by limo to Indian Springs where she met her lunch date, USD Superintendent Dr. Jill Shackelford.

More about Ps'yche':

Parents Names: Arshona Nelson & Patrick Anderson

Siblings: Jon Burns, Jr., Areonans & Reonans Nelson

Principal's Name: Bernice Cottrell

Favorite Subject in School: Math & Science

College Plans: Attend Harvard and study Law

Career Plans: Attorney

Hobbies: Reading, writing, babysitting

Motivation: Her parents and wanting a good life



Kauffman Scholars are Encouraged to Follow this Leader

Marcella Gladney Lee has several years of experience working in the nonprofit sector as an attorney, executive, volunteer, and advocate. Specifically, she has an extensive background working with youth and families and has held several high level positions in some of the community's most respected organizations.

In addition to serving as KSI's Vice President/General Counsel, Lee has helped establish a group home and an outreach program for pregnant and parenting teens. She also is a national facilitator and a consultant for similar organizations.

If you ask Lee about her accomplishments and community service, she'll minimize all that she does and is doing. While giving her all to Kauffman Scholars, she still finds time to do pro bono work for neighborhood groups, teach a monthly class for Legal Aid of Western Missouri and remains instrumental in community programs providing service to teen parents and their families.

Leading by example, KSI Vice President/General Counsel Marcella Gladney Lee has dedicated her life to volunteering and public interest and community service.