



KAUFFMAN
SCHOLARS, INC.

COMMUNITY Connection

August 2007

Destination: College!

Conference and College Fair Attracts More than One Thousand Parents and Students

Over 1000 parents and students from the Kauffman Scholars program, and guests from the community, attended the "Destination: College!" Parent and Scholar Conference and College Fair at the Metropolitan Community College Business and Technology College on June 2nd. Parents and Scholars participated in workshops on a range of topics during the morning. In the afternoon, Scholars dived into the

College Fair, where 24 colleges from around the region provided information about their schools. Kevin Lockett, Manager of Minority Entrepreneurship for the Ewing



Dana Washington and Scholars Akeem and Kamaal Washington

Marion Kauffman Foundation and former Kansas City Chief, delivered the conference keynote address.

Parents signed up for workshops on topics such as Parental Involvement



Evelyn Sarabia and her parents

at the Secondary Level; How are You Smart? A Parent's Perspective; The ABC's of Alcohol, Drugs and Sex – 101 Ways to Educate Students; Technology – Understanding "My-Space"; and Is Your Student Ready for College?

Dana Washington signed up for the ABC's of Alcohol, Drugs and Sex; "I was pleased to find out that some of the information reinforced things I'm already doing," said Ms. Washington. "And they gave us some new things to think

about, like making sure that your child knows that if they're in trouble, they can call you and trust you to help them, no questions asked."

Scholars and invited students chose from workshops on College Preparation; Money Management; College Entrance – What's the Mystery?; and the Benefits of Dual Enrollment. Kauffman Scholar Evelyn Sarabia, who recently completed the eighth grade at

Rosedale Middle School in Kansas City, Kansas was especially interested in the Dual Enrollment Workshop. "They told us about how students can take courses in high school to earn extra credit for college credits and advanced placement when you get to college," said Ms. Sarabia. "Everything you do each year counts." She also attended a College Preparation workshop, where she got information about time management, taking effective notes and study preparation.

"Kauffman Scholars offers a wonderful opportunity," said Olin Coones, father of Scholar Melody Coones, who will be a ninth grader at Sumner

Academy this year. He attended the Parental Involvement and the College Backpack workshops. "The program gives Melody interaction and experiences she wouldn't have any other way."



Scholar Melody Coones and her family



A Message from Our President and CEO



Ready or Not?

Greetings,

There is growing recognition among educators and employers that many students who graduate from high school are not truly 'ready' for college or careers. *Education Week* recently devoted its June 12, 2007 edition of "Diplomas Count" to examining the question of "how can public education best prepare students for success in life after high school?"

What has clearly emerged is the need to find a balance between teaching academic skills and the "soft" or "applied" skills that help students develop problem-solving capability, critical thinking, creativity, and verbal and nonverbal communication skills. These essential thinking capacities are vital for young adults as they proceed through college and into their careers.

For success in college, students must have the ability to think analytically and interpret information. As citizens and adults, they will be called on to evaluate issues, ideas, people, even the products they choose to buy. When defining career choices, young people need the cognitive tools to evaluate their own talents, strengths and weaknesses.

In his article "The Essential Cognitive Backpack," **Mel Levine, MD, identifies four I's of thinking** – habits of mind – that young people need to develop:

Interpretation – forming and applying concepts, using prior knowledge and experience;

Instrumentation – the ability to think long term and preview outcomes, apply step-by-step thinking to decision making; develop and practice effective work patterns;

Interaction – developing successful interpersonal relationships without sacrificing individuality and personal standards; communicating effectively, and relating to authority;

Inner Direction – learning to evaluate personal strengths and shortcomings, previewing potential life choices, and deciding on individual career values.

Kauffman Scholars Inc. (KSI) seeks to create the balance between rigorous academic preparation and effective cultivation of soft skills by providing our Scholars with both academic and life coaches. Academic Coaches develop a curriculum to help students build their knowledge and confidence through both traditional and experience-based learning opportunities. Concurrently, Life Coaches create a curriculum and provide guidance to nourish decision-making skills, interpersonal and collaborative capabilities, and the ability to set and adhere to personal ethical standards and realize long-term goals. Life Coaches assess the following areas of instruction for each Scholar: Approach to Learning; Self-Awareness, and Leadership Development.

Through the Approach to Learning workshops, Scholars identify their particular learning preferences and are coached on strategies to put those preferences to effective use.

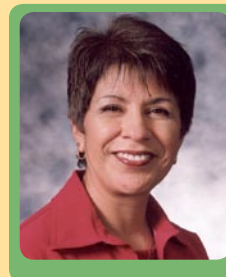
As the KSI program evolves, we will continue to engage in self-evaluation of our practices to make sure we provide our Scholars with the tools they need to be ready for success in college, and in life.

Best regards,

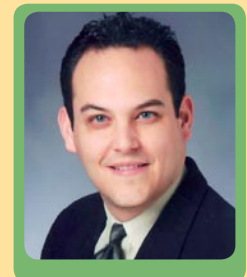
R. Stephen Green, Ed.D.
President and CEO

KSI Elects Two New Board Members

Kauffman Scholars Inc. (KSI) announced the election of Hallmark Cards, Inc. Finance Manager Jorge Cadenas and El Centro President and CEO Mary Lou Jaramillo to the KSI Board of Directors in May, 2007. The new board members join the following directors on the KSI Board: Dan Kingston, Chairman of the Board; John Tyler, Secretary; Paul Schofer, Treasurer; Dr. Stephen Green, KSI President and CEO; Tony Masso, President and CEO of Consortium Health Plans; Lonnie Scott, President, Mid-America Minority Business Development Council; and Carol Marinovich, former mayor of Kansas City, Kansas and currently Senior Vice President, Fleishman-Hillard Inc.



Mary Lou Jaramillo



Jorge Cadenas

Continued on page 3

Summer Means Enrichment for Scholars



Summer is a new season of learning for Kauffman Scholars! For the first time this year, Class 1 Scholars had the opportunity to apply for KSI funding awards to support their participation in summer enrichment opportunities not affiliated with the KSI program. All Scholars who applied had to be in “green standing” – have excellent attendance, grades and behavior – to be considered for the awards.

Thirty-one Scholars made their presentations before members of the KSI Senior Leadership Team, and nearly 90 percent received awards, or approval to participate in a program where funding was not requested. Scholars will explore a broad range of opportunities during this summer, from New York to Hawaii, and in Western Europe!

Here, in no particular order, are a few examples of the great activities Kauffman Scholars are taking part in this summer:

Rashane Hamby will study at the School for Film and Television in New York City; Jessica Charles, Jacob Handy and Danzal Jones will journey on tours of Historically Black Colleges and Universities; DeKiyra Love will participate in a Lead America Conference on the campus of the University of Central Oklahoma; Tiffany Jones will study at the Colorado State University Veterinary Med Program; Kristen Forrest and Richard Tucker will attend Upward Bound Math Science Center at Wichita State University; JoAnne Zhou will study at the University of Hawaii at Manoa Summer Math Camp; Julio Rodriguez will participate in the University of Kansas Engineering School; and Imelda Reyes will attend the University of Missouri Rolla Engineering Camp. Ada Sims will tour and study in Western Europe, with EF Educational Tours.

Jakarta Lee and Thierry Swinney both received full scholarships to the 2007 Telluride Association Sophomore Seminars (TASS). Lee and Swinney are among a group of 48 high school sophomores selected nationally to attend one of three six-week college-level courses at the University of Michigan and Indiana University. Admission to TASS is highly selective. Jakarta is the recipient of a full scholarship to the 2007 Telluride Association Sophomore Seminar at the University of Michigan, “Infectious Disease Detectives: Fighting Epidemics Using the Right Tools.” Thierry received a full scholarship to the 2007 Telluride Association Sophomore Seminar at Indiana University, “Modern Sports and the African American Experience.”

Each of the awards received by the Scholars, although all cannot be listed here, are a result of their excellent endeavors. Scholars in Class 1 who do not participate in outside programs are engaged in a KSI active learning, independent study project centering on city parks. About 170 sophomores in this social action assignment visit parks to assess current public use, quality of the location, environmental care, and whether the park is safe for the community it is intended to serve. By the close of the project, students will present their evaluations. They will make proposals for improvements, elimination of certain locations, or establishment of new parks in more viable locations.

“The phenomena of summer learning loss is clearly not a problem for these ambitious and engaged Scholars,” Dr. Stephen Green, President and CEO of KSI, said. “The curiosity and eagerness exhibited by our Scholars shines a bright light on their path to becoming college graduates.”

New Board Members, *Continued*

“We are very pleased to welcome these accomplished leaders to our Board,” said Dr. Stephen Green. “Ms. Jaramillo and Mr. Cadenas will be important resources for KSI, in expanding civic support for our efforts to dramatically increase the number of urban youth who become college graduates.”

As president and CEO of El Centro, Inc., Mary Lou Jaramillo provides strategic direction for the multi-faceted educational, social and economic development non-profit corporation. Prior to joining El Centro, she was executive director of the Hispanic Economic Development Corporation; previously, she was executive director of the Mattie Rhodes Center for more than a decade. During that time, Ms. Jaramillo increased the annual budget from \$550,000 in 1994 to \$2.1 million in 2002; facilitated the development of a comprehensive strategic plan; directed a \$2 million capital campaign in 18 months, and expanded program offerings to emphasize cultural competency and respond to community needs. Ms. Jaramillo is a member of the board and vice chair of the Health Care Foundation of Greater Kansas City, and a member of the Kauffman Fund Advisory Board, among other civic activities. She earned her bachelor’s degree in management and her master’s degree in non-profit management from Park College in Parkville, Missouri.

Jorge Cadenas is Finance Manager for Hallmark Cards, and is responsible for fiscal management of approximately 2,000 Hallmark Gold Crown stores. Mr. Cadenas negotiates acquisition of independent retail stores for Hallmark’s Corporate Store Group, and collaborates with Hallmark’s legal, real estate and sales division during the acquisitions transfer process. He also provides business analysis for high visibility retailers, and counsel on advancing business improvement initiatives. Previously, Mr. Cadenas served as senior financial analyst for Hallmark, from 2001 to 2004. Prior to joining Hallmark he was senior consultant for KPMG Consulting, Inc. (now BearingPoint) in McLean, Virginia; and financial manager for TWD & Associates in Arlington. Mr. Cadenas was the recipient of the 2006 Hallmark Crown of Excellence Award, and is a member of the board of directors of the Guadalupe Center, Inc. He earned his bachelor’s degree in economics from George Mason University in Virginia.

KSI Staff



R. Stephen Green
President & CEO



Marcella Gladney Lee
Vice President /
General Counsel



Terry Gibson
Controller



Joy Vann-Hamilton
Vice President of
Program Operations



Pam Harris
Director of
Parent Engagement



Manomay Malathip
Director of Scholar
Engagement



James McGirt
Lead Academic Coach-
Math/MO Site Manager

Life Coaches

David Bryant
Johnny Felder
Jaime Goring
Denise Hastings
Will McDowell
Wes Parham
Ronda Porter
Francisco Ramirez
Cynthia Robinson
Sonrisa Rowh
Claudia Vazquez-Puebla

College Coaches

Cokethea Hill
Tiffany Williams

Academic Coaches

Tyrone Bates
Lam Do
Tyrone Gethers
Nick Hardesty
Liz Hicks
Shantelle Jordan
Tina McGrew
Scott Neubauer
Marilu Mercado
Lucius Perry
Marie Ridge

KSI Board of Directors

Jorge Cadenas
R. Stephen Green
Mary Lou Jaramillo
Daniel Kingston
Carol Marinovich
Anthony R. Masso
Paul Schofer
Lonnie Scott
John Tyler

KSI Advisory Board

Tom Bloch
Arnold H. Brown
R. Stephen Green
Jan Kreamer
Anthony R. Masso
Jeanne Patterson
Fred Pryor
Dr. Bernard Taylor
Guy Townsend, III
Carl Schramm
John Tyler

Administrative Support

Connie Morgan
IT Specialist

Karen Collins
Executive Administrative
Assistant

Sue Emslie
Administrative Assistant

Pamela Fellows
Administrative Assistant

Maribel Martinez
Administrative Assistant



KAUFFMAN
SCHOLARS, INC.

4801 Rockhill Road Kansas City, MO 64110-6789